

EcoPlus and EcoSlim Drawings and Charts (24PS HLG)

Wiring Diagrams:

EL001199 - Without Dimmer

EL001200 - With Dimmer

EL001201 - Lutron Diva Dimmer with Multiple Power Systems

EL001202 - Lutron Lyneo Dimmer with Multiple Power Systems

For:

EP22 Series = EP22, EP22M, EP22G

EP24 Series = EP24, EP24M, EP24G

EP26 Series = EP26, EP26M, EP26G

EP34 Series = EP34, EP34M, EP34G

EP33 Series = EP33, EP33M, EP33G

EP36 Series = EP36, EP36M, EP36G

EP44 Series = EP44, EP44M, EP44G

EP46 Series = EP46, EP46M, EP46G

ES22 Series = ES22, ES22M, ES22G

ES24 Series = ES24, ES24M, ES24G

ES26 Series = ES26, ES26M, ES26G

ES33 Series = ES33, ES33M, ES33G

ES34 Series = ES34, ES34M, ES34G

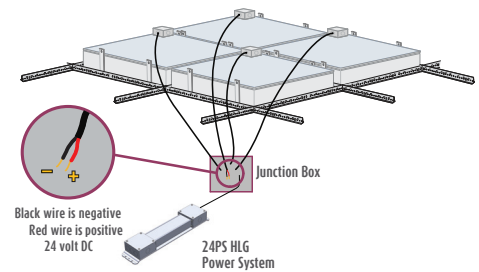
ES36 Series = ES36, ES36M, ES36G

ES44 Series = ES44, ES44M, ES44G

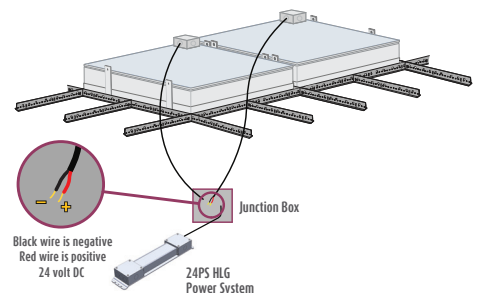
ES46 Series = ES46, ES46M, ES46G

Sky Factory 24PS HLG Power System Dimensions and Weights

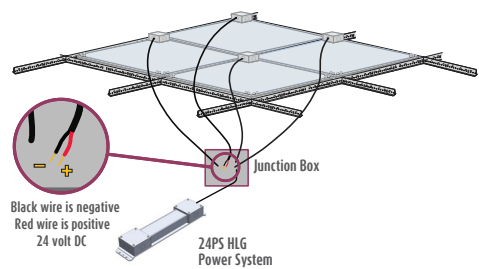
Wire Sizing Chart



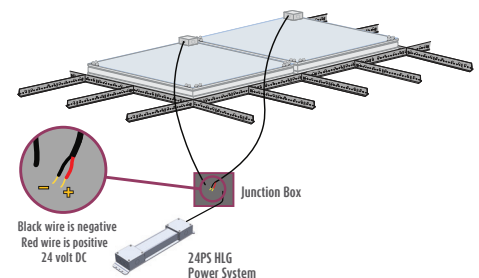
EcoPlus – EP22 & 24 Series



EcoPlus – EP26,33,34,36,44 & 46 Series



EcoSlim – ES22 & 24 Series



EcoSlim – ES26,33,34,36,44 & 46 Series

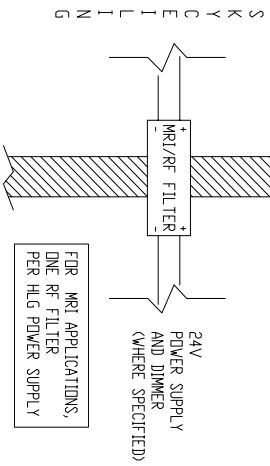
For technical support at any time during the installation, please call us **toll free at 866-759-3228**.

We want your installation to go as smoothly as possible. Thank you for choosing Sky Factory.

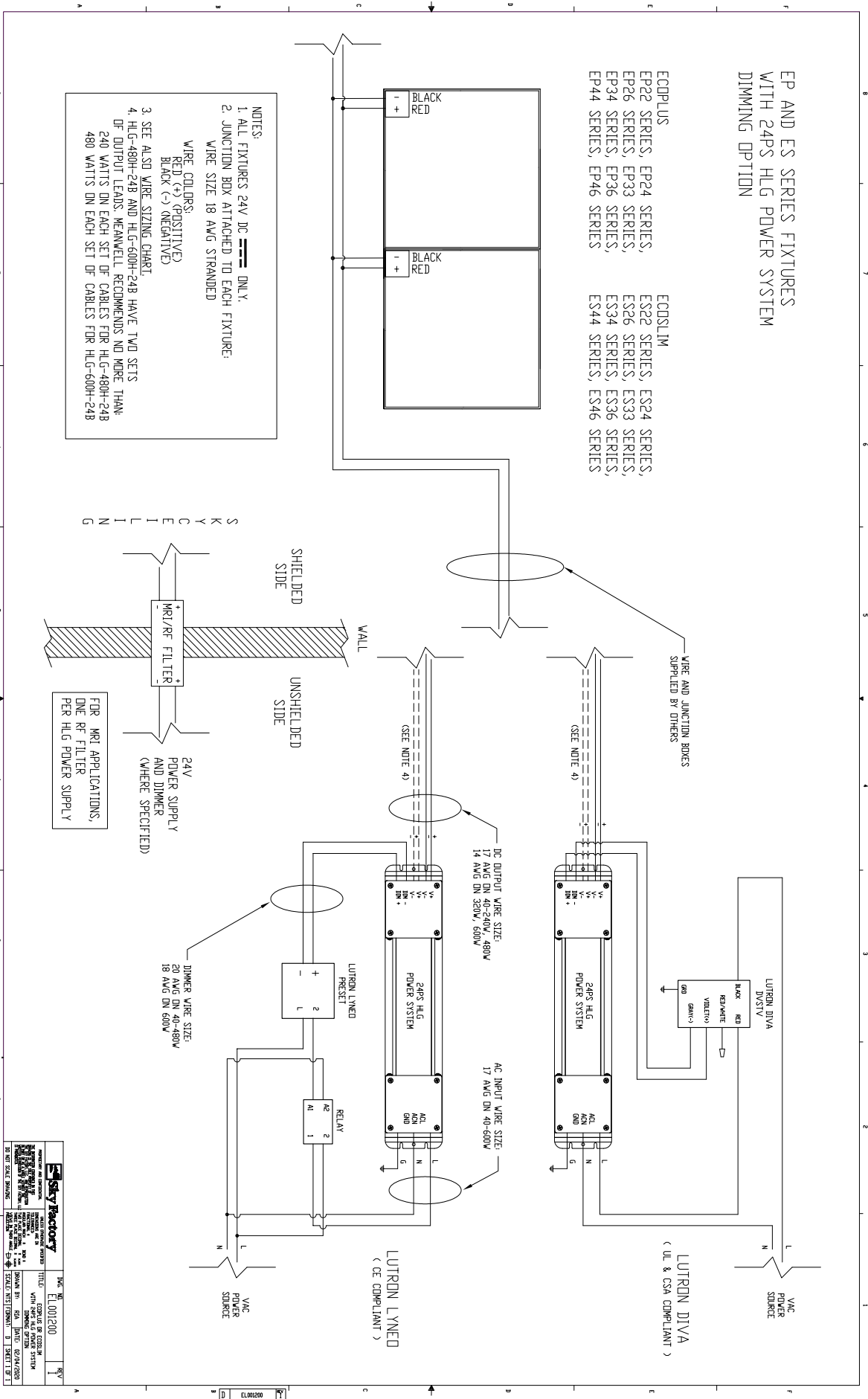
EP AND ES SERIES FIXTURES
WITH 24PS HLG POWER SYSTEM
DIMMING OPTION

- ECODPLUS
EP22 SERIES, EP24 SERIES,
EP26 SERIES, EP33 SERIES,
EP34 SERIES, EP36 SERIES,
EP44 SERIES, EP46 SERIES
- ECOSLIM
ES22 SERIES, ES24 SERIES,
ES26 SERIES, ES33 SERIES,
ES34 SERIES, ES36 SERIES,
ES44 SERIES, ES46 SERIES

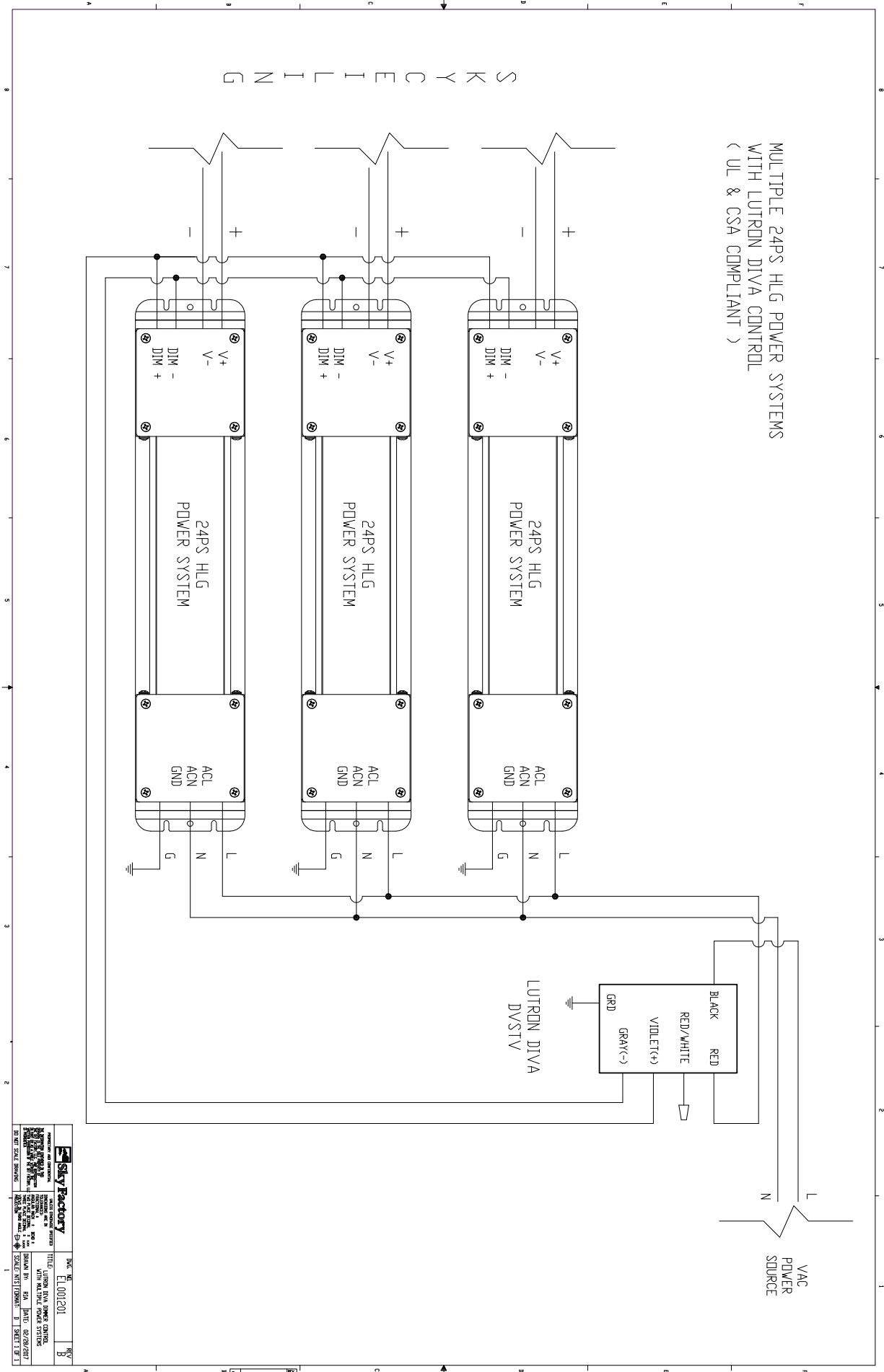
- NOTES:
1. ALL FIXTURES 24V DC ONLY,
2. JUNCTION BOX ATTACHED TO EACH FIXTURE;
WIRE SIZE 18 AWG STRANDED
- WIRE COLORS:
RED (+) (POSITIVE)
BLACK (-) (NEGATIVE)
3. SEE ALSO WIRE SIZING CHART.
4. HLG-480H-24B AND HLG-600H-24B HAVE TWO SETS
OF OUTPUT LEADS. MEANWELL RECOMMENDS NO MORE THAN
480 WATTS ON EACH SET OF CABLES FOR HLG-600H-24B



| | | |
|--|------------------|------------------|
| Essey Factory | DATE: 01/2001 | REV: 1 |
| TITLE: COMPLETE EP & ES HLG WITH DIMMING OPTION SYSTEM | | |
| DESIGNED BY: SJA | CHECKED BY: SJA | DATE: 02/04/2001 |
| DRAWN BY: SJA | DATE: 02/04/2001 | SCALE: 1/1 |
| DATE: 02/04/2001 | BY: SJA | SCALE: 1/1 |

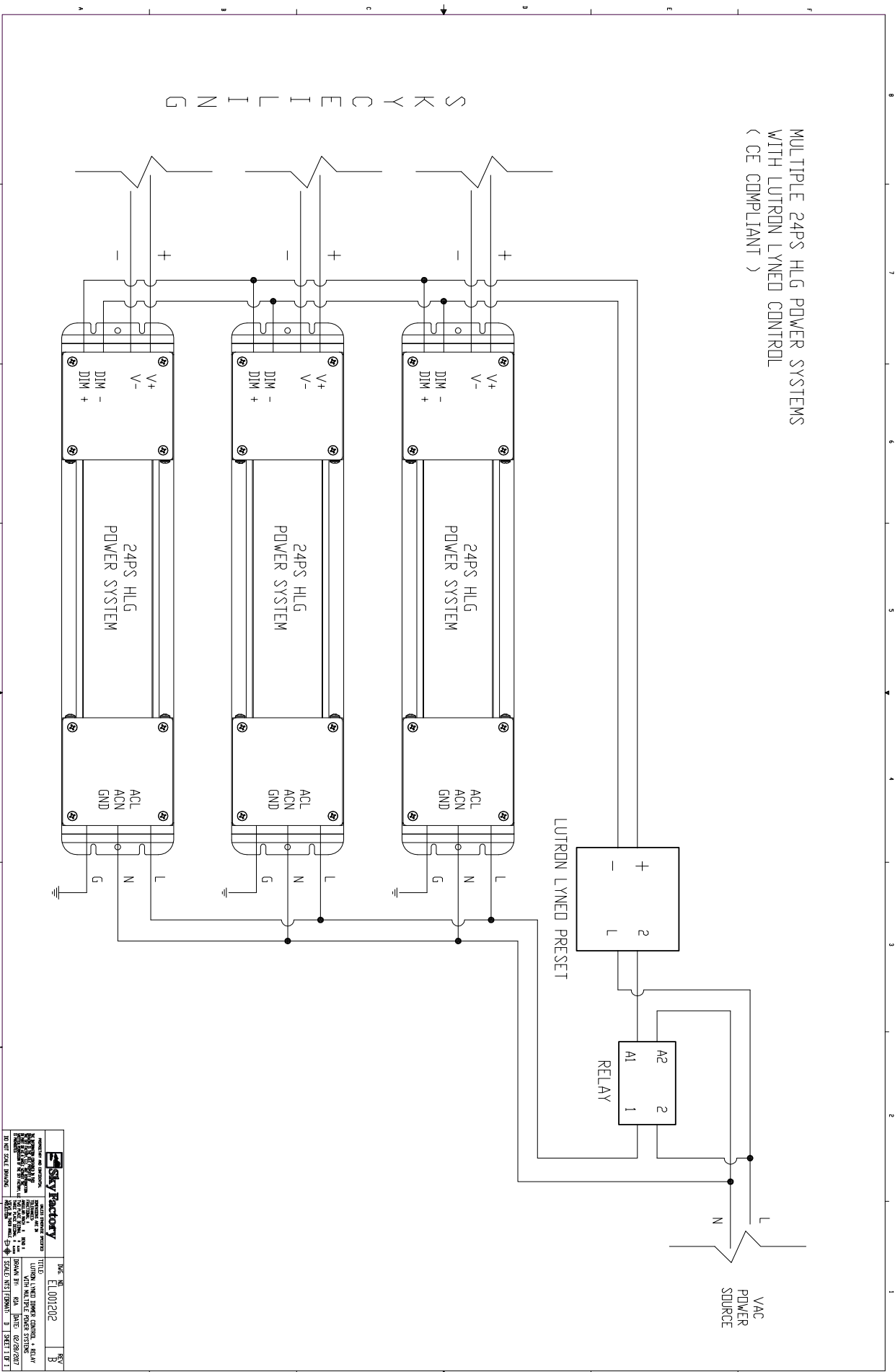


MULTIPLE 24PS HLG POWER SYSTEMS
WITH LUTRON DIVA CONTROL
(UL & CSA COMPLIANT)



| | | |
|--------------------------------------|--------------|--|
| Sky Factory | SKY No. | EL001201 |
| REGISTERED AS AN ELECTRICAL ENGINEER | TITLE | LUTRON DIVA DIMMER CONTROL WITH MULTIPLE POWER SYSTEMS |
| REGISTERED AS AN ELECTRICAL ENGINEER | ISSUED BY | 604 JIMMY QIN/2007 |
| REGISTERED AS AN ELECTRICAL ENGINEER | SCALE | AS SHOWN |
| REGISTERED AS AN ELECTRICAL ENGINEER | SHEET NO. | 3 |
| REGISTERED AS AN ELECTRICAL ENGINEER | TOTAL SHEETS | 3 |

MULTIPLE 24PS HLG POWER SYSTEMS
 WITH LUTRON LYNEO CONTROL
 (CE COMPLIANT)



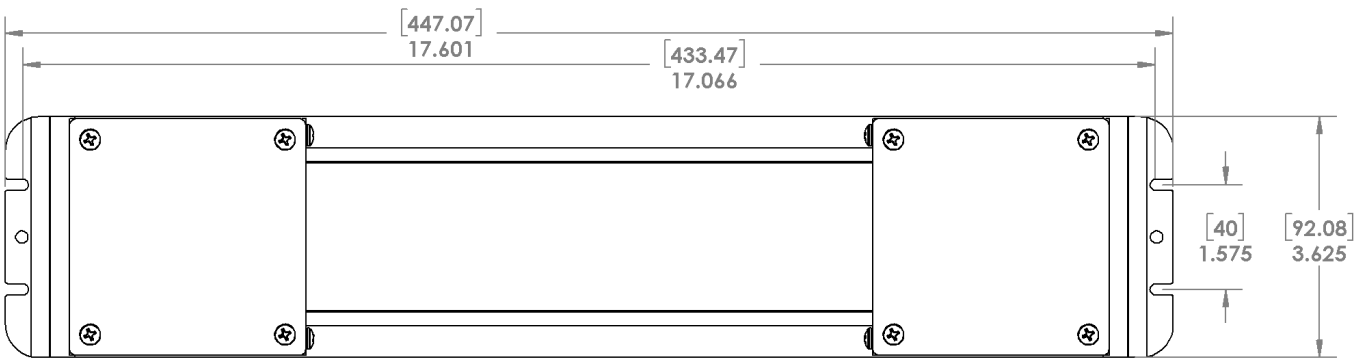
S K Y C E I L I N G

| | | | | |
|--|--|--|------------------------|-------------------|
| | SKY FACTORY 1000 W. 10th St. Phoenix, AZ 85001 (602) 944-1111 www.skyfactory.com | TITLE LUTRON LYNEO DIMMER CONTROL & RELAY WIRING DIAGRAM | SHEET NO. E1.001202 | SHEET 8 |
| | PROJECT NO. 1000 W. 10th St. Phoenix, AZ 85001 (602) 944-1111 www.skyfactory.com | DATE 02/28/2017 | DRAWN BY SKY | CHECKED BY SKY |

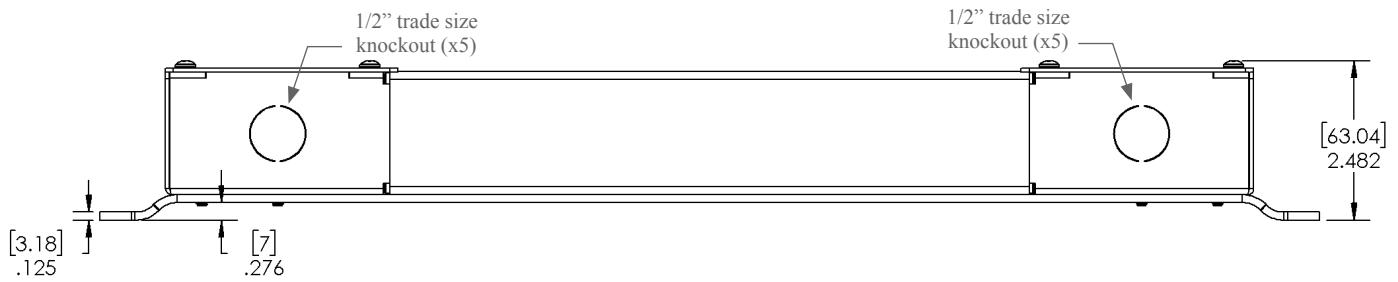
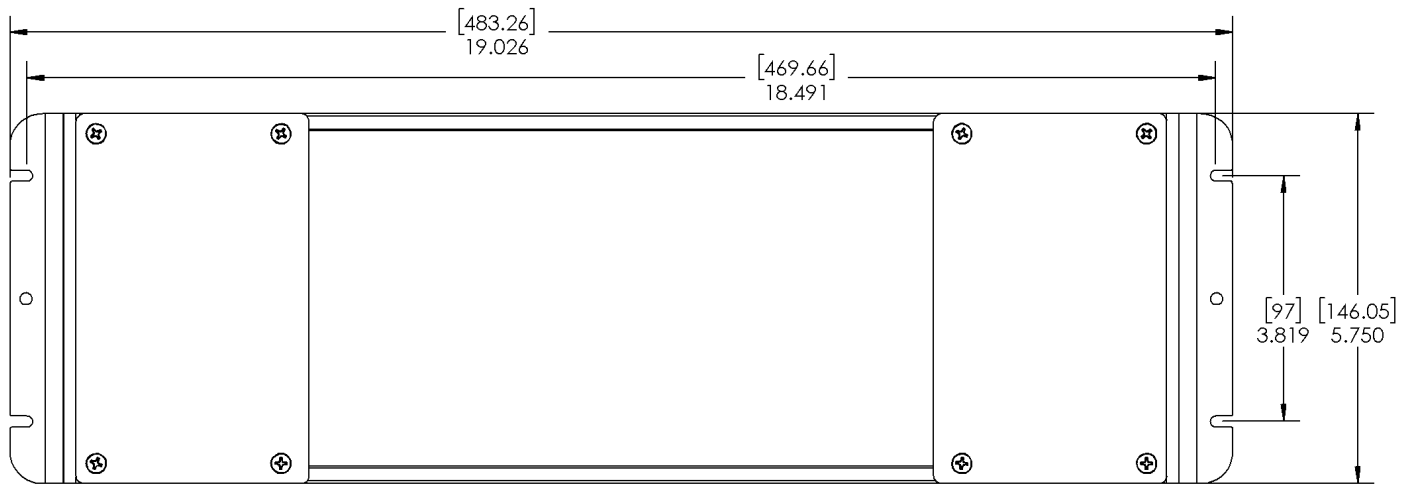
Sky Factory 24PS HLG Power System Dimensions and Weights:

| DIMENSIONS AND WEIGHTS | | | | |
|---|---------|---------|--------|--------|
| | LENGTH | WIDTH | HEIGHT | WEIGHT |
| 40 WATT 60 WATT | 18 IN | 3.7 IN | 2.4 IN | 3 LBS |
| | 45.8 CM | 9.4 CM | 6.1 CM | 1.4 KG |
| 80 WATT 100 WATT 120 WATT 150 WATT 185 WATT 240 WATT | 18 IN | 3.7 IN | 2.4 IN | 4 LBS |
| | 45.8 CM | 9.4 CM | 6.1 CM | 1.8 KG |
| 320 WATT | 18 IN | 3.7 IN | 2.4 IN | 6 LBS |
| | 45.8 CM | 9.4 CM | 6.1 CM | 2.7 KG |
| 480 WATT | 19.1 IN | 5.8 IN | 2.5 IN | 8 LBS |
| | 48.5 CM | 14.8 CM | 6.4 CM | 3.6KG |
| 600 WATT | 19.1 IN | 5.8 IN | 2.5 IN | 10 LBS |
| | 48.5 CM | 14.8 CM | 6.4 CM | 4.6 KG |

Mounting dimensions: 40W, 60W, 80W, 100W, 120W, 150W, 185W, 240W, 320W 24PS HLG Power Systems



Mounting dimensions: 480W, 600W 24PS HLG Power System



Wire Sizing Chart

This chart is a guideline for recommended wiring practice.

Applies to 24V DC power only, i.e. from “fixture to power system.”

Not meant for “V AC to power system” nor “dimmer to power system.”

Wire sizes in AWG Conversion chart below.

| Distance: Feet (Meters) | AWG for 5A | AWG for 10A | AWG for 15A |
|-------------------------|------------|-------------|-------------|
| 20 (6) | 18 | 14 | 12 |
| 30 (9) | 16 | 12 | 10 |
| 40 (12) | 14 | 10 | 10 |
| 50 (15) | 12 | 10 | * |
| 60 (18) | 12 | 10 | * |
| 80 (24) | 10 | * | * |
| 100 (30) | 10 | * | * |

* Terminal block wire range #10 - #22 Awg.

| AWG | MM |
|-----|-------|
| 10 | 6.271 |
| 11 | 5.156 |
| 12 | 3.302 |
| 13 | 2.629 |
| 14 | 2.088 |
| 15 | 1.652 |
| 16 | 1.308 |
| 17 | 1.039 |
| 18 | 0.823 |